

Anatomage

TABLE

General

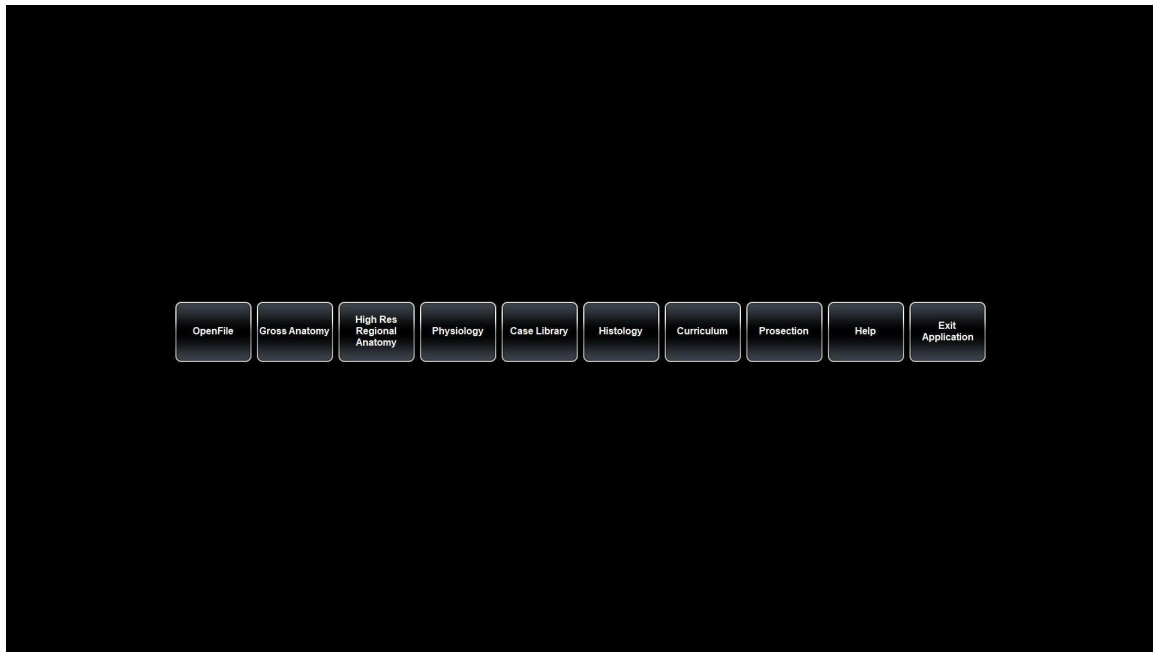
How to Use Open File

Table of Contents

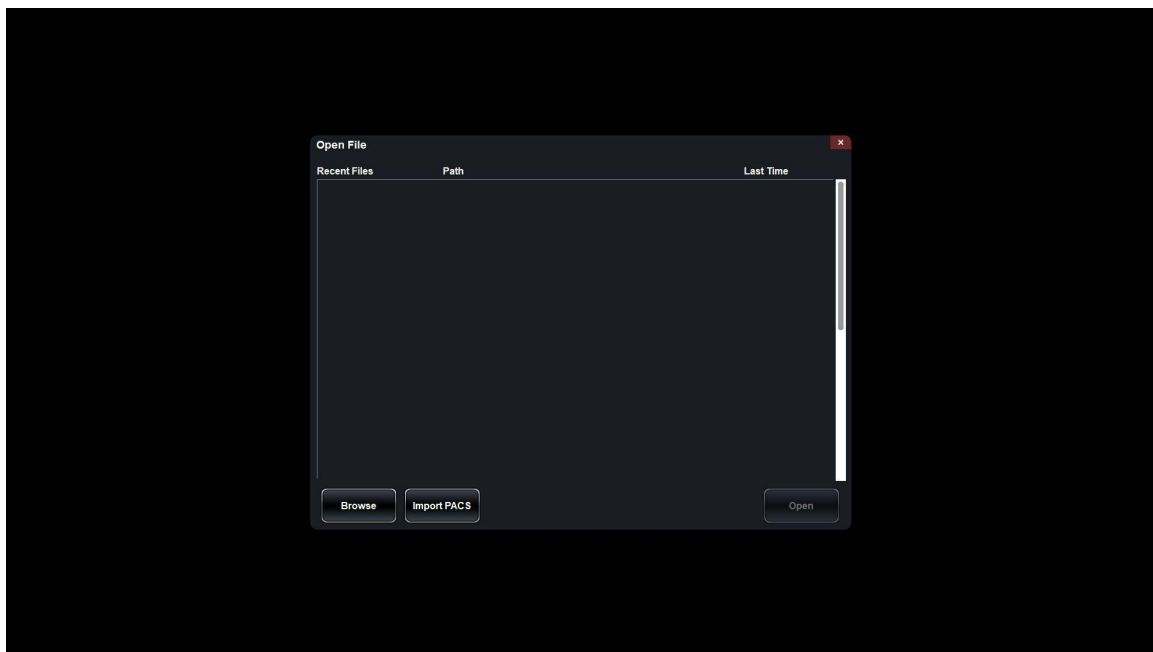
Import a DICOM or Invivo File Using OpenFile	2
Integrating and Accessing PACS Using OpenFile	4

Import a DICOM or Invivo File Using OpenFile

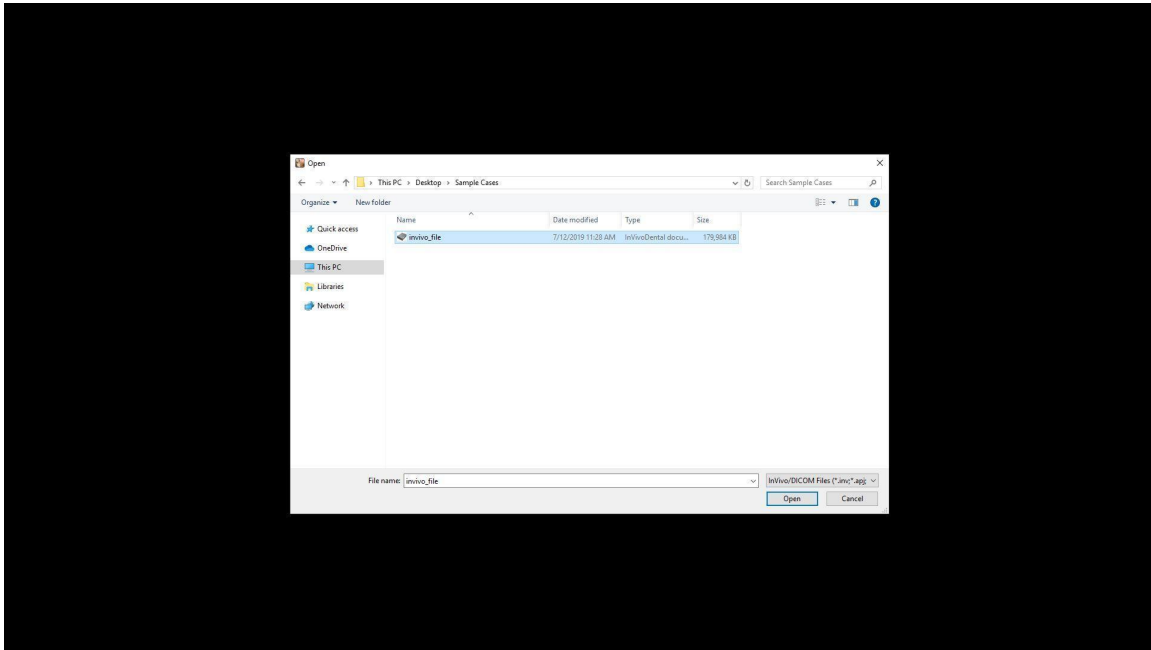
Step 1: Single tap OpenFile on the main menu.



Step 2: Single tap Browse to locate a DICOM series (.dcm) or Invivo (.inv) file.



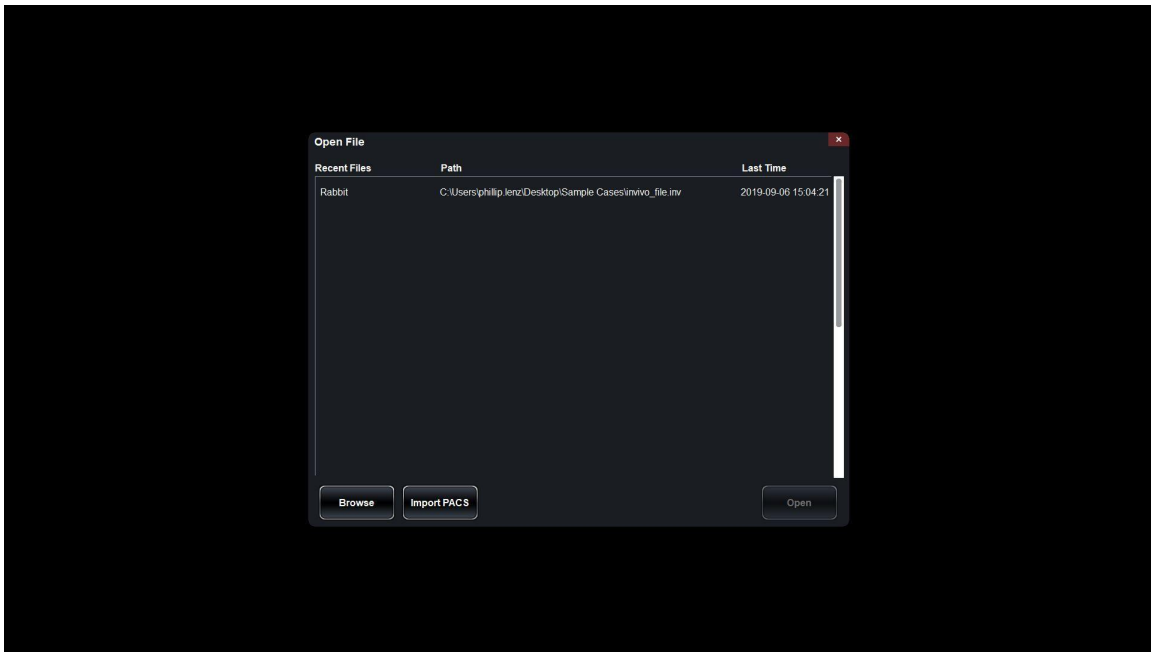
Step 3: After locating desired scan, select scan to highlight and tap Open.



Step 4: If the appropriate file type (.dcm, .inv) is opened, the 3D DICOM will appear.

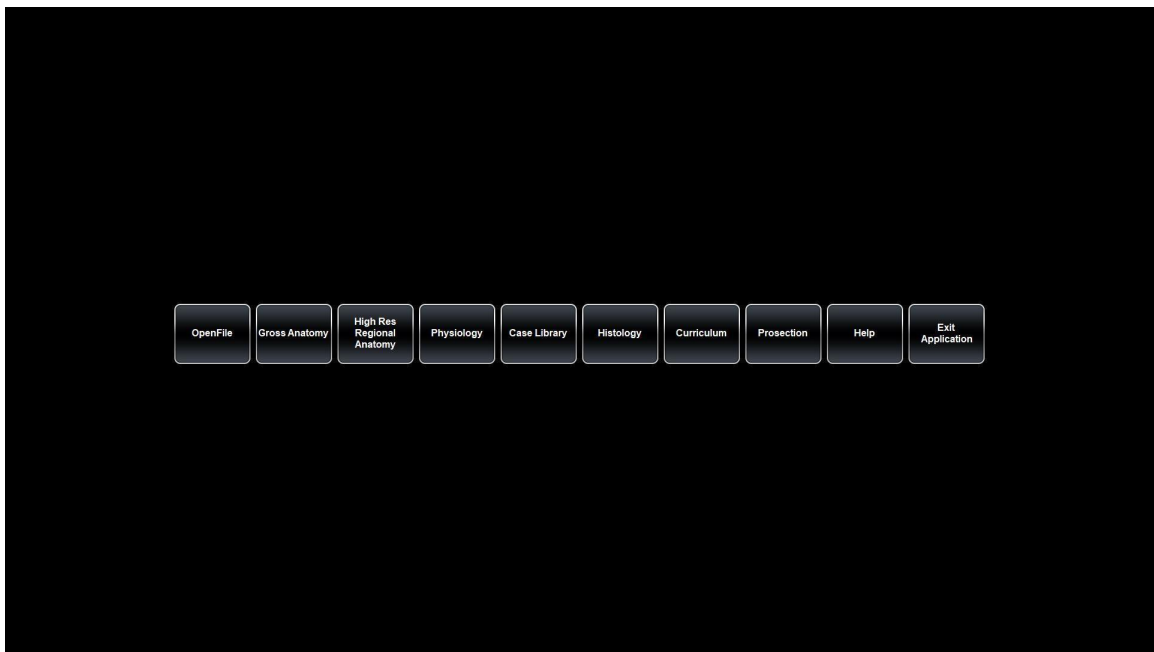


Step 5: Once a scan has been opened, it will appear under Recent Files in OpenFile.

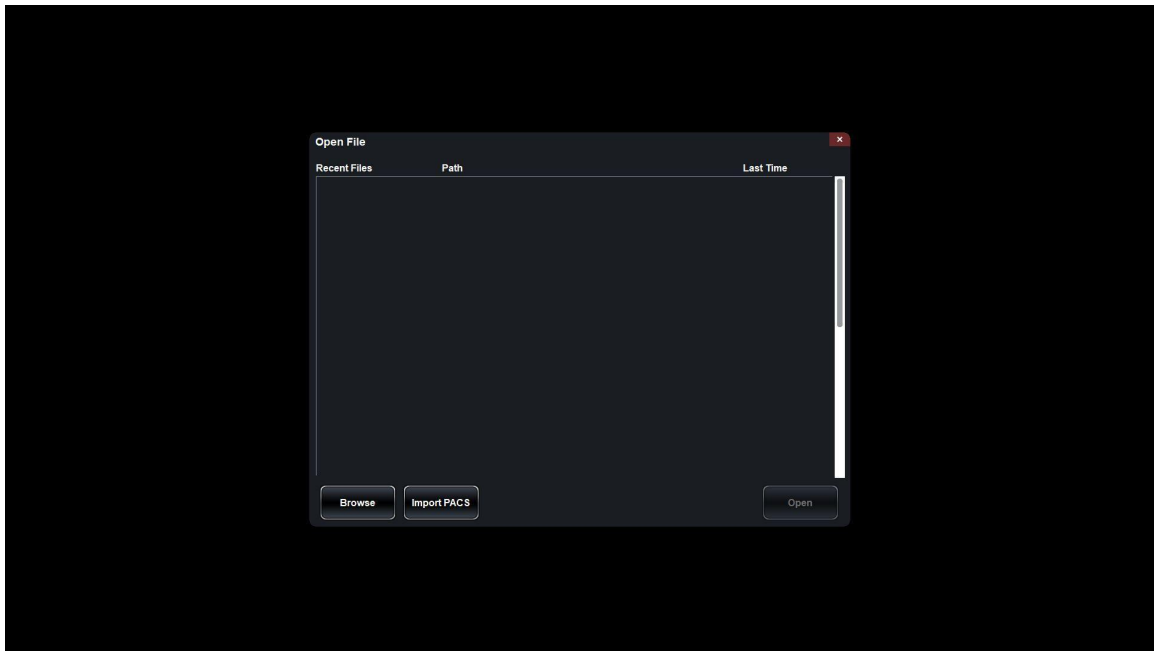


Integrating and Accessing PACS Using OpenFile

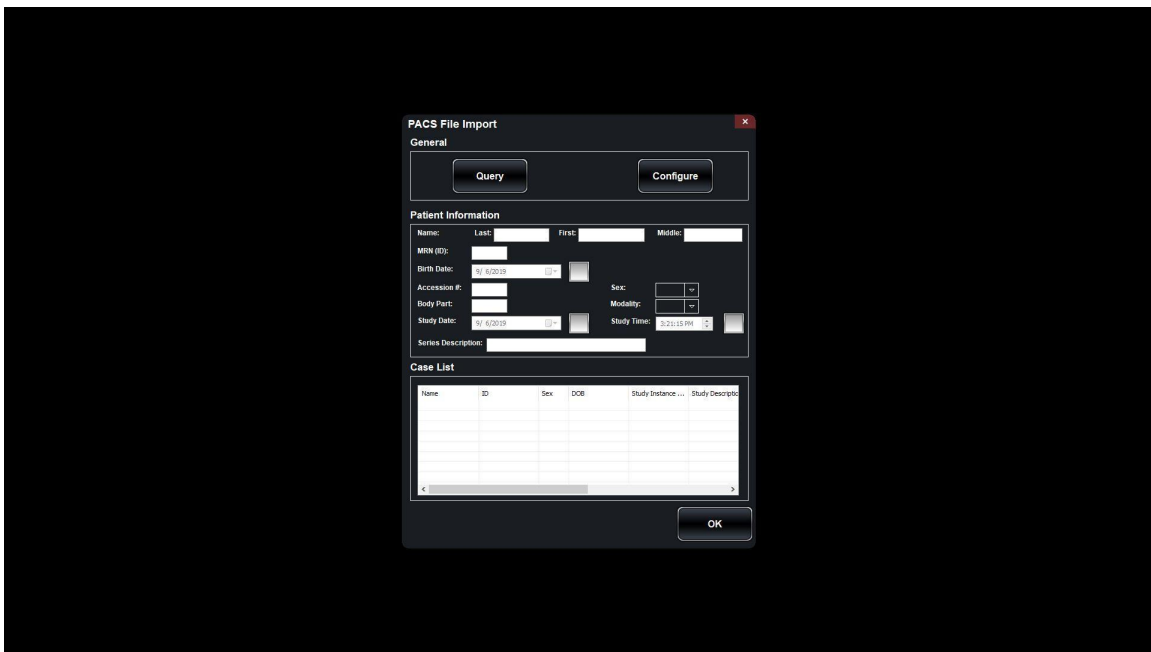
Step 1: Single tap OpenFile on the main menu.



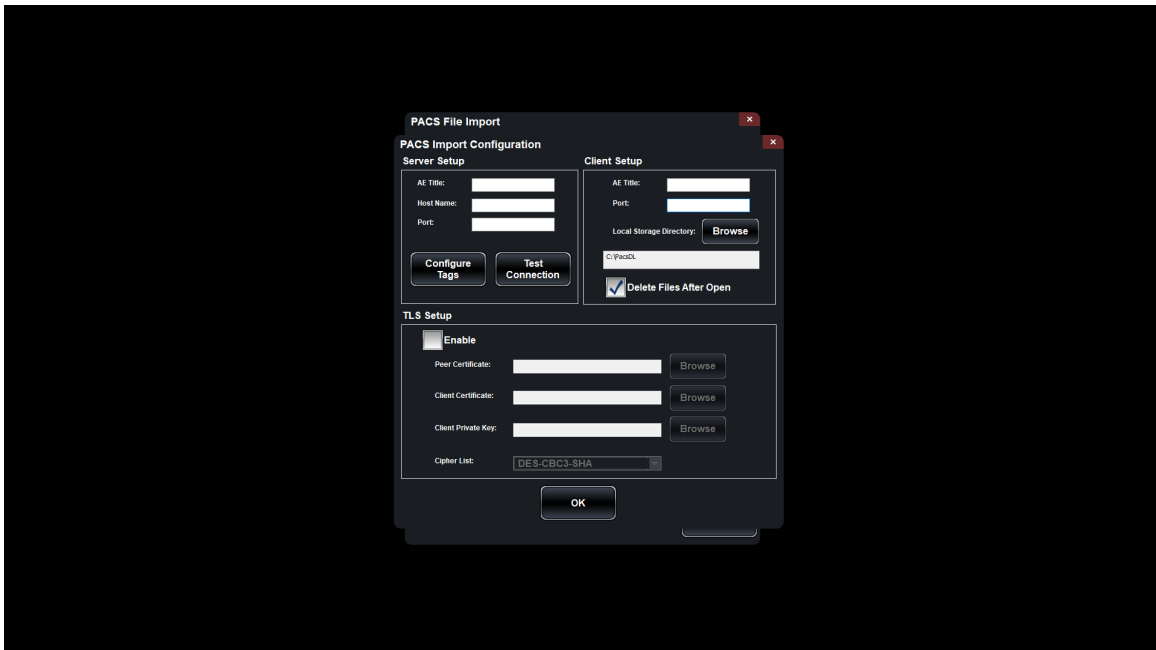
Step 2: Single tap Import PACS to access the PACS File Import dialog.



Step 3: Tap Configure to integrate PACS with Table



Step 4: Fill in Server Setup and Client Setup information and tap Test Connection



Step 5: Click OK to return to PACS File Import dialog. Tap Query to populate Case List on the bottom and search for patient scans using Patient Information filters.

